



## VALUE II VAR18804T



### VALUE II VAR18804T Model number: 35VAR18804TH18

**3 beds • 2 baths • 1440 sq.ft. • 18' width • 80' depth**

Our home building facilities invest in continuous product and process improvements. Plans, dimensions, features, materials, specifications and availability are subject to change without notice or obligation. Renderings and floor plans are representative likenesses of our homes and may differ from the actual homes. We invite you to tour a Home Center near you and inspect the highest value in quality housing available or call (337) 369-3588 to speak with a Home Consultant. Copyright 2017, CMH. All rights reserved.

<https://www.claytonhomesnewiberia.com>

### CLAYTON HOMES-NEW IBERIA

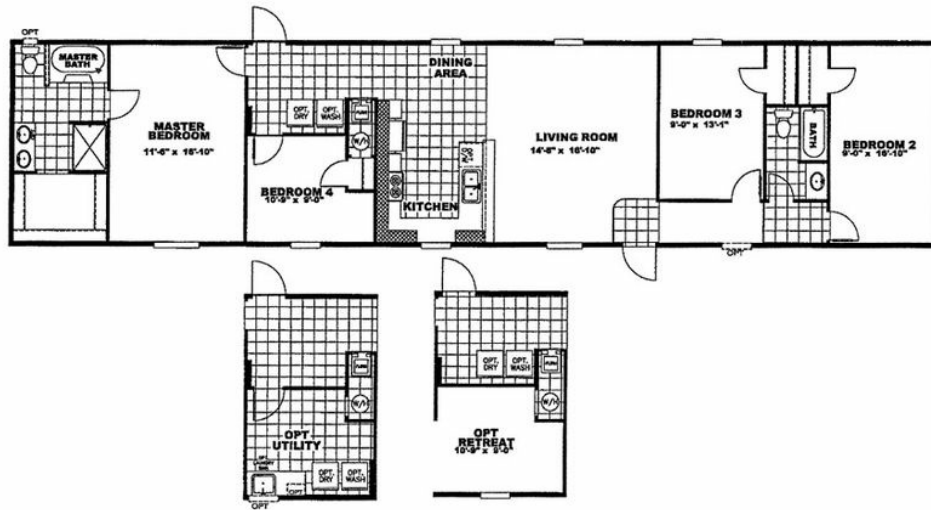
8304 WEST HWY 90  
NEW IBERIA, LA 70560

Monday - Thursday: 9am - 7pm  
Friday: 9am - 6pm  
Saturday: 9am - 5pm  
Sunday: Closed

(337) 369-3588



# VALUE II VAR18804T



## VALUE II VAR18804T Model number: 35VAR18804TH18

3 beds • 2 baths • 1440 sq.ft. • 18' width • 80' depth

Our home building facilities invest in continuous product and process improvements. Plans, dimensions, features, materials, specifications and availability are subject to change without notice or obligation. Renderings and floor plans are representative likenesses of our homes and may differ from the actual homes. We invite you to tour a Home Center near you and inspect the highest value in quality housing available or call (337) 369-3588 to speak with a Home Consultant. Copyright 2017, CMH. All rights reserved.

<https://www.claytonhomesnewiberia.com>

### CLAYTON HOMES-NEW IBERIA

8304 WEST HWY 90  
NEW IBERIA, LA 70560

Monday - Thursday: 9am - 7pm  
Friday: 9am - 6pm  
Saturday: 9am - 5pm  
Sunday: Closed

(337) 369-3588